

ALLEGRO

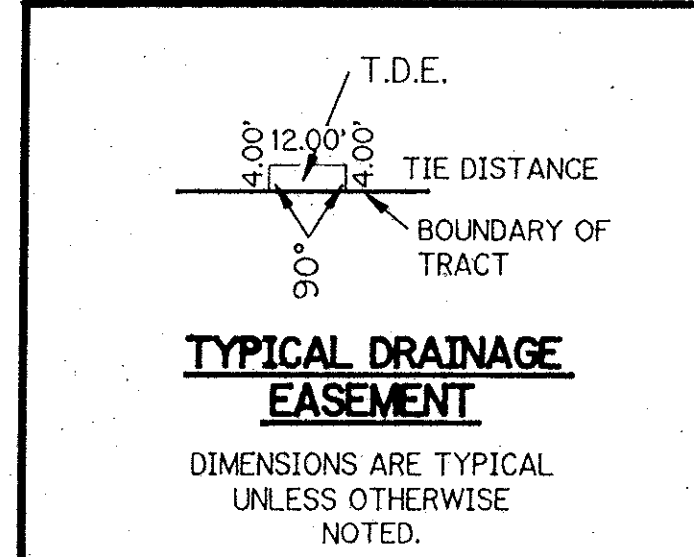
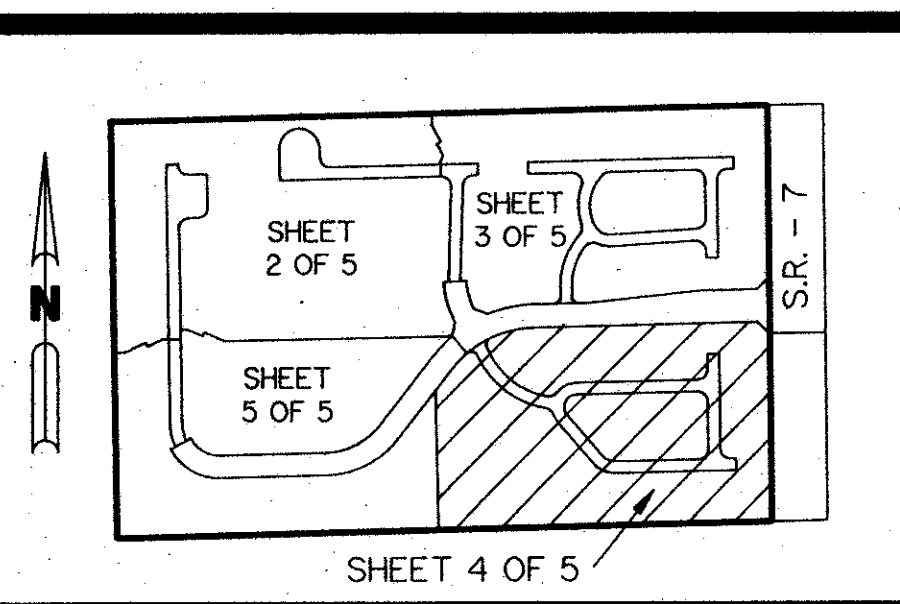
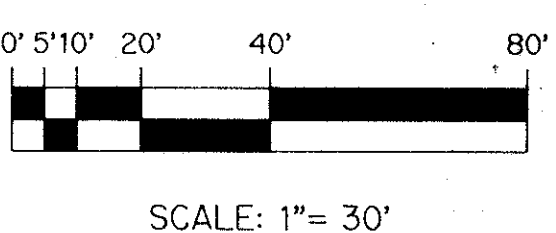
(A P.U.D.)

BEING A REPLAT OF A PORTION OF LOTS 6 THROUGH 11, INCLUSIVE ACCORDING TO THE FLORIDA FRUITLANDS COMPANY'S SUBDIVISION NO.2, AS RECORDED IN PLAT BOOK 1, PAGE 102 OF THE PUBLIC RECORDS OF PALM BEACH COUNTY, FLORIDA, TOGETHER WITH THE VACATED ROAD RIGHT-OF-WAY LYING TO THE SOUTH PER O.R. BOOK 1841, PAGES 1960 THROUGH 1963, OF THE PUBLIC RECORDS OF PALM BEACH COUNTY, FLORIDA. IN SECTION 25, TOWNSHIP 47 SOUTH, RANGE 41 EAST, PALM BEACH COUNTY, FLORIDA.

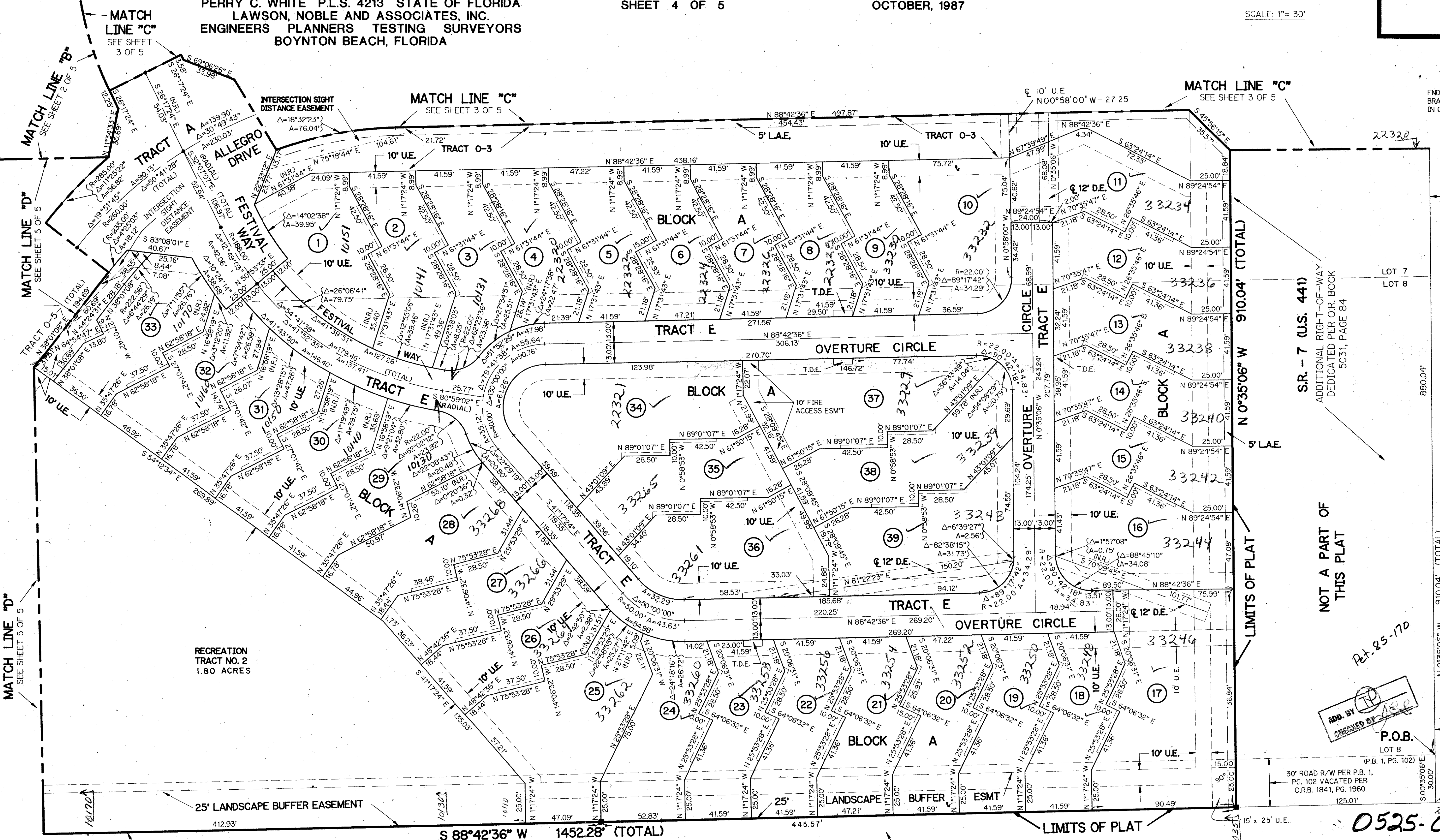
SHEET 4 OF 5

OCTOBER, 1987

THIS INSTRUMENT PREPARED BY
PERRY C. WHITE P.L.S. 4213 STATE OF FLORIDA
LAWSON, NOBLE AND ASSOCIATES, INC.
ENGINEERS PLANNERS TESTING SURVEYORS
BOYNTON BEACH, FLORIDA



KEY MAP
N.T.S.



25/17/41
SUBDIVISION: Allegro
BOOK 60 PAGE 102
PLAT BOOK 1841 PAGES 1960-1963
ROAD # 69
PUD NAME
33433

SR - 7 (U.S. 441)
ADDITIONAL RIGHT-OF-WAY
DEDICATED PER O.R. BOOK
5031, PAGE 84

NOT A PART OF
THIS PLAT

ADD. BY
CHECKED BY
P.O.B.
LOT 8
(P.B. 1, PG. 102)

LOT 49 OF FLORIDA FRUIT
LANDS SUBDIVISION NO. 2
P.B. 1, PG. 102

LOT 49 OF FLORIDA FRUIT
LANDS SUBDIVISION NO. 2
P.B. 1, PG. 102

NOTE: SEE SHEET 2 OF 5 FOR
TYPICAL OVERHANG AND
EASEMENT.

ALLEGRO
60/6
SHEET 4 OF 5
FND. P.B. CO. BRASS DISC IN CONC.
23000
22490
0525-001